



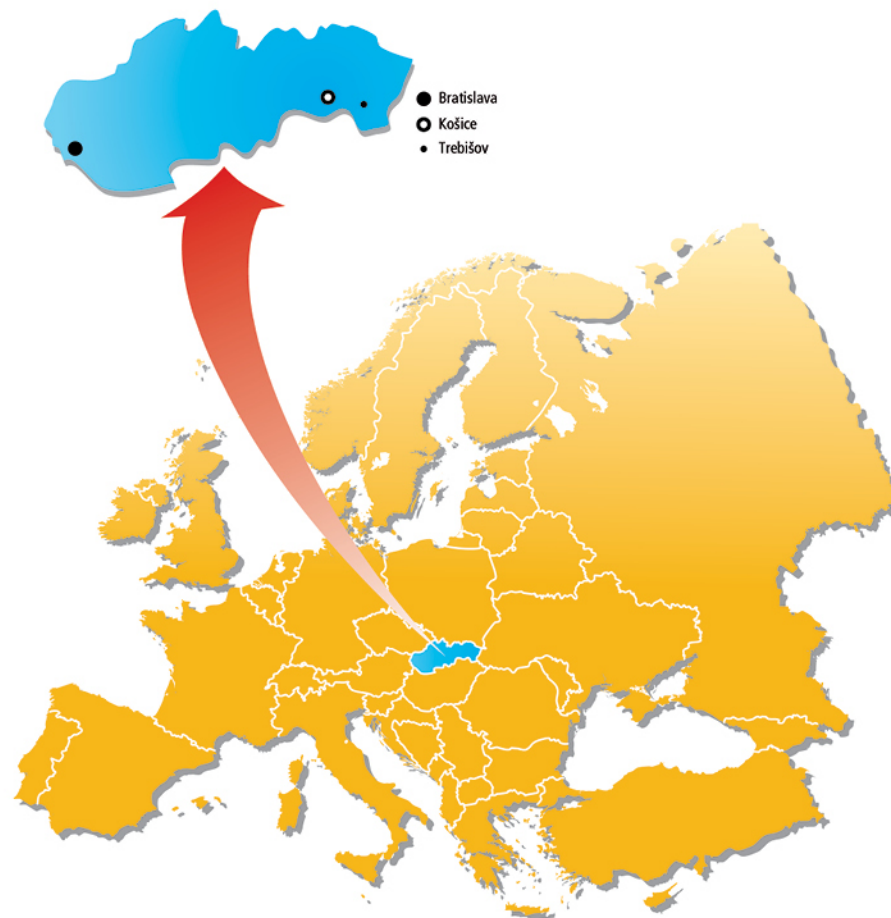
# metalport s.r.o.

*... with us, you will move the Earth*



Manufacture attachments for construction and earth moving machines

[www.metalport.sk](http://www.metalport.sk)



## METALPORT s.r.o.

METALPORT s.r.o. (Ltd.) is a Slovak engineering and manufacturing company that was founded in 1999, its main production capacities are focused on the **DEVELOPMENT, CONSTRUCTION, MANUFACTURE, SALES and SERVICE** of accessories for construction, earth-moving and agricultural machines.

Attachments are produced for machines from 1-100 tons:

- Mini & Midi Excavators
- Backhoe Loaders
- Tracked Excavators
- Wheeled Excavators
- Wheeled Loaders
- Dozers
- Graders
- Skid Steer Loaders
- Telescopic Loaders

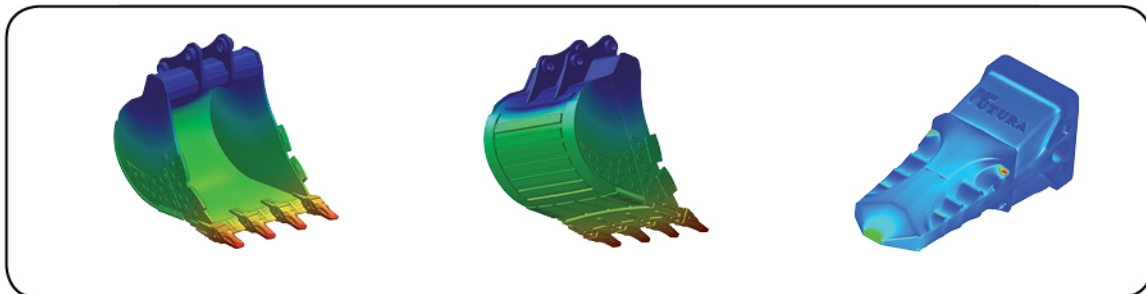
for almost all other world-wide construction machinery brand including: **ATLAS, BOBCAT, CASE, CATERPILLAR, DAEWOO, DOOSAN, HITACHI, HYUNDAI, JCB, KAISER, KOMATSU, KUBOTA, LIEBHERR, MENZI MUCK, NEWHOLLAND, O&K, TAKEUCHI, VOLVO, YANMAR** and the others.

Most of our production is directed to European Union markets mainly to the Netherlands, Belgium, Germany and Austria as well as the Slovak and Czech markets.

The company production plant is located in the east of Slovakia in the town of Trebišov, 60km away from the Ukraine, 110km from Poland and 30km from Hungary. On its premises totalling 9000m<sup>2</sup> (of which 2500m<sup>2</sup> are halls) the firm produces the products mentioned above. Our firm's machine tooling capacity makes it possible to comply with the most demanding requirements from domestic and foreign commercial partners.

We offer a 12 months warranty period for all METALPORT s.r.o. products and spare parts. This warranty begins from date of delivery and is conditioned by the correct installation, maintenance and use of such accessories and parts within general limits of normal use.

We are holders of a STN EN ISO 9001:2009 - TUV SUD Slovakia quality certificate.



  
Ing. Martin Medvid  
Managing Director





# CONTENT

## Backhoe Buckets

page 2 - 3



## Skeleton Buckets

page 7



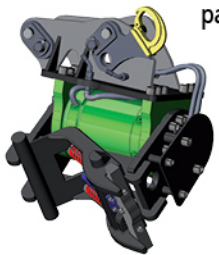
## Adapter Plates

page 8



## Rotating & Tilting Adapters

page 13



## Ditch Cleaning Buckets

page 4



## Skeleton Buckets

page 7



## Excavator Rippers

page 8



## Dozer Ripper

page 14



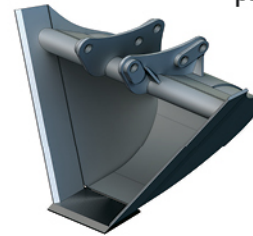
## Hydraulic Buckets

page 5



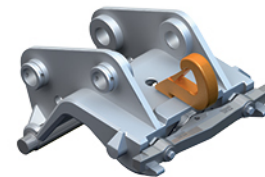
## Trapezoidal Buckets

page 7



## Quick Couplers

page 10



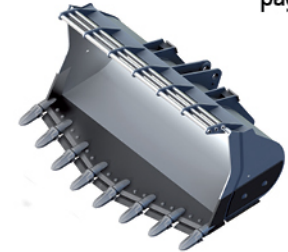
## Teeth Systems

page 15



## Loader Buckets

page 6



## Pallet Forks

page 8



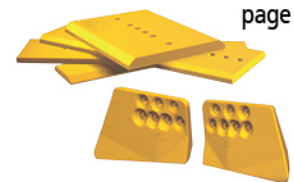
## Hydraulic Hammers

page 12



## Wear Parts

page 16



# Backhoe buckets for mini and medium excavators

Type designation: KM0, KM1, KM2, KM3, KM35, KM4, KM5

Bucket in this category are for general use, fitted on mini and medium excavators and with overall curb weight up to 12 tons. They are produced in the following versions: **SD (Standard Duty)** and **HD (Heavy Duty)**.



KM1 backhoe bucket, SD version

Buckets SD are used for excavation and shovelling of fine to medium grain material such as clay, soil, etc. It features a wear front blade and reinforced side edges

<b>KM0</b>	excavators weight 2 tons							
Width (mm) / Teeth	200 / 2	300 / 3	400 / 3	500 / 4	600 / 4	700 / 5	800 / 5	
Capacity (m³)	0,015	0,024	0,035	0,046	0,057	0,067	0,078	

<b>KM1</b>	excavators weight 2 - 2,6 tons							
Width (mm) / Teeth	200 / 2	300 / 3	400 / 3	500 / 4	600 / 4	700 / 5	800 / 5	
Capacity (m³)	0,02	0,03	0,05	0,06	0,08	0,09	0,11	

<b>KM2</b>	excavators weight 2,6 - 3,6 tons							
Width (mm) / Teeth	300 / 3	400 / 3	500 / 4	600 / 4	700 / 5	800 / 5	900 / 5	
Capacity (m³)	0,05	0,08	0,10	0,12	0,15	0,17	0,19	

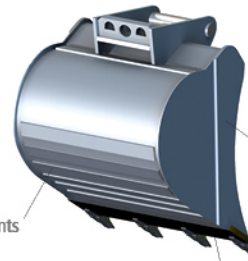
<b>KM3</b>	excavators weight 3,5 - 6 tons							
Width (mm) / Teeth	300 / 3	400 / 3	500 / 4	600 / 4	700 / 5	800 / 5	900 / 6	
Capacity (m³)	0,06	0,09	0,11	0,14	0,17	0,20	0,23	

<b>KM35</b>	excavators weight 6 - 9 tons							
Width (mm) / Teeth	300 / 3	400 / 3	500 / 4	600 / 4	700 / 5	800 / 5	900 / 6	
Capacity (m³)	0,08	0,12	0,16	0,19	0,23	0,27	0,31	

<b>KM4</b>	excavators weight 8,5 - 10 tons								
Width (mm) / Teeth	300 / 2	400 / 3	500 / 3	600 / 4	700 / 4	800 / 4	900 / 5	1000 / 5	
Capacity (m³)	0,10	0,15	0,20	0,25	0,31	0,36	0,42	0,48	

<b>KM5</b>	excavators weight 10 - 12 tons									
Width (mm) / Teeth	400 / 3	500 / 3	600 / 3	700 / 4	800 / 4	900 / 4	1000 / 5	1100 / 5	1200 / 5	1300 / 5
Capacity (m³)	0,18	0,24	0,30	0,36	0,43	0,50	0,56	0,63	0,66	0,76

KM3 backhoe bucket, SD version with brackets for Lehnhoff quick coupler



bottom reinforcements

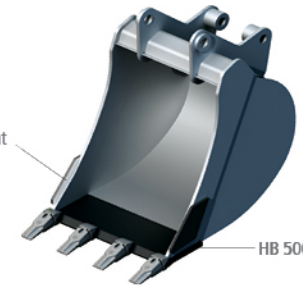
reinforced side board

HB 500 blade



parallel HB 400 trimming knife reinforcement

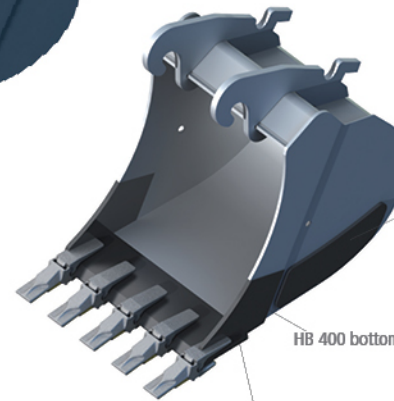
KM35 backhoe bucket  
Bucket designed for Backhoe-Loaders



HB 500 blade

KM5 backhoe bucket, HD version

HD Buckets are used for excavation and shovelling compact materials with medium to high splitting strength. All work areas are wear resistant.



HB 400 side board reinforcement

HB 400 bottom knife

HB 500 blade

with brackets for Verachtert CW quick coupler

HB 500 bottom reinforcements





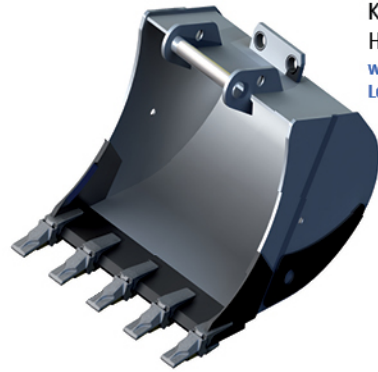
# Backhoe buckets for hydraulic excavators

Type designation: KM55, KM6, KM65, KM7, KM75, KM8, KM9

Buckets in this category are fitted on hydraulic excavators with an overall curb weight of up to 54 tons. They are produced in the **HD (Heavy Duty)** and **Rock** versions.

KM75 backhoe bucket, ROCK version

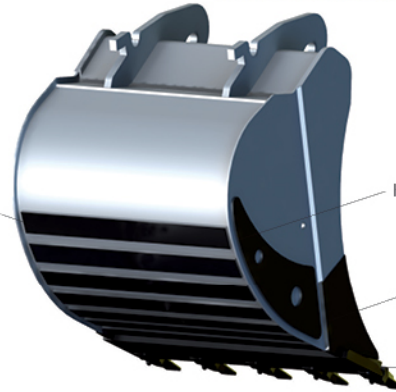
Rock buckets are used for work with the highest splitting strengths, e.g. in quarries and in demolition work



KM55 backhoe bucket, HD version with brackets for Lehnhoff quick coupler

HB 500 bottom reinforcements

KM65 backhoe bucket, HD version with brackets for Verachtert CW quick coupler

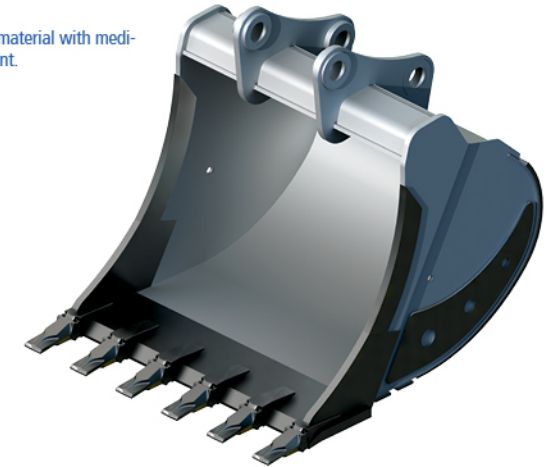


HD Buckets are used for excavations and shovelling compact material with medium to high splitting strengths. All work areas are wear resistant.

HB 400 side board reinforcement

HB 400 bottom knife

HB 500 blade



KM55		excavators weight 12 - 15 tons									
Width (mm) / Teeth	400 / 3	500 / 3	600 / 3	700 / 4	800 / 4	900 / 4	1000 / 5	1100 / 5	1200 / 6	1300 / 6	
Capacity (m³)	0,19	0,26	0,32	0,40	0,47	0,54	0,61	0,69	0,76	0,83	

KM6		excavators weight 15 - 19 tons									
Width (mm) / Teeth	500 / 3	600 / 3	700 / 4	800 / 4	900 / 4	1000 / 4	1100 / 5	1200 / 5	1300 / 6	1400 / 6	
Capacity (m³)	0,30	0,38	0,47	0,55	0,64	0,73	0,81	0,90	0,99	1,08	

KM65		excavators weight 19 - 23 tons									
Width (mm) / Teeth	600 / 3	700 / 3	800 / 4	900 / 4	1000 / 4	1100 / 5	1200 / 5	1300 / 5	1400 / 6	1500 / 6	
Capacity (m³)	0,44	0,53	0,63	0,73	0,84	0,94	1,04	1,15	1,25	1,35	

KM7		excavators weight 22 - 29 tons									
Width (mm) / Teeth	600 / 3	700 / 4	800 / 4	900 / 4	1000 / 4	1100 / 5	1200 / 5	1300 / 5	1400 / 6	1500 / 6	1600 / 6
Capacity (m³)	0,49	0,60	0,71	0,83	0,94	1,06	1,18	1,30	1,41	1,53	1,65

KM75		excavators weight 28 - 38 tons									
Width (mm) / Teeth	800 / 3	900 / 3	1000 / 3	1100 / 4	1200 / 4	1300 / 4	1400 / 5	1500 / 5	1600 / 5	1700 / 6	1800 / 6
Capacity (m³)	0,73	0,90	1,11	1,25	1,39	1,53	1,68	1,82	1,97	2,11	2,25

KM8		excavators weight 38 - 48 tons									
Width (mm) / Teeth	800 / 3	900 / 3	1000 / 3	1100 / 4	1200 / 4	1300 / 4	1400 / 4	1500 / 5	1600 / 5	1700 / 6	1800 / 6
Capacity (m³)	0,97	1,12	1,27	1,44	1,60	1,77	1,94	2,11	2,27	2,44	2,61

KM9		excavators weight 46 - 54 tons						
Width (mm) / Teeth	800 / 3	1000 / 3	1200 / 4	1500 / 4	1600 / 5	1800 / 5	2000 / 6	
Capacity (m³)	1,02	1,36	1,69	2,19	2,36	2,69	3,03	

HB 400 bucket bottom

HB 500 bottom reinforcements

parallel HB 400 trimming knife reinforcement

HB 400 side board reinforcement

HB 400 bottom knife

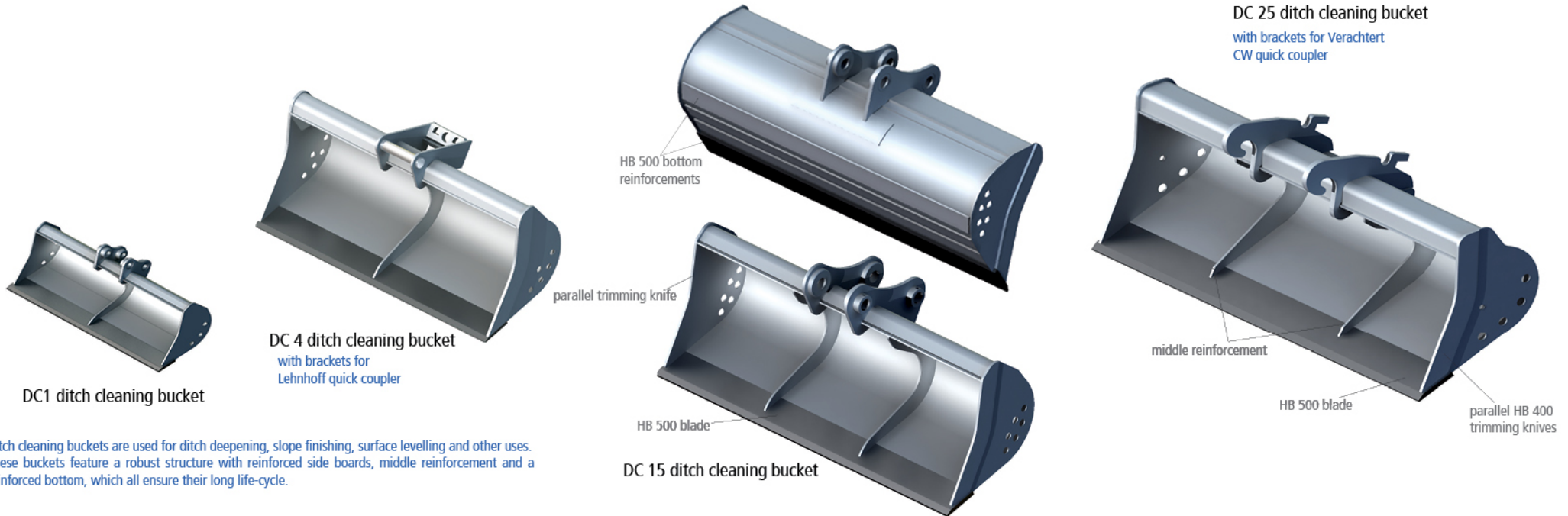
HB 500 blade



# Ditch cleaning buckets

Type designation: DC0 - DC40

Ditch cleaning buckets are fitted on excavators with a curb weight of up to 46 tons. They are produced in the **HD (Heavy Duty)** version.



Ditch cleaning buckets are used for ditch deepening, slope finishing, surface levelling and other uses. These buckets feature a robust structure with reinforced side boards, middle reinforcement and a reinforced bottom, which all ensure their long life-cycle.

## Ditch cleaning buckets for mini excavators

excavator weight (t)	bucket type	width (mm)	capacity (m <sup>3</sup> )
- 1,6	DC0	1000	0,06
		1100	0,07
1,6 - 2,6	DC1	1000	0,09
		1100	0,10
2,6 - 3,6	DC2	1200	0,11
		1000	0,10
3,5 - 6	DC3	1200	0,12
		1400	0,14
		1000	0,12
		1200	0,14
		1400	0,17

## Ditch cleaning buckets for medium sized excavators and backhoe - loaders

excavator weight (t)	bucket type	width (mm)	capacity (m <sup>3</sup> )
6 - 9	DC4	1400	0,25
		1500	0,27
		1600	0,29
9 - 12	DC5	1500	0,30
		1600	0,34
		1800	0,38

## Ditch cleaning buckets for hydraulic excavators

excavator weight (t)	bucket type	width (mm)	capacity (m <sup>3</sup> )
12 - 15	DC15	1600	0,41
		1800	0,46
		2000	0,51
15 - 19	DC20	1800	0,58
		2000	0,65
		2200	0,72
19 - 23	DC25	2000	0,78
		2200	0,86
		2400	0,95
22 - 29	DC30	2000	0,95
		2200	1,05
28 - 38	DC35	2400	1,15
		2000	1,15
38 - 46	DC40	2200	1,27
		2400	1,39
		2000	1,42
		2200	1,57
		2400	1,72

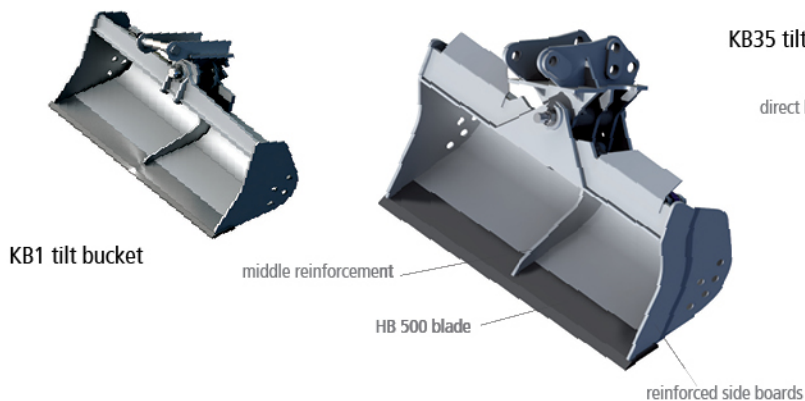




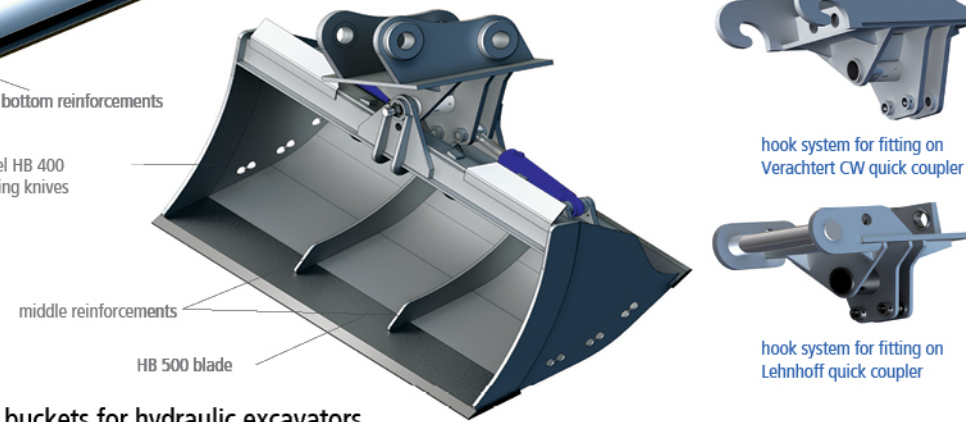
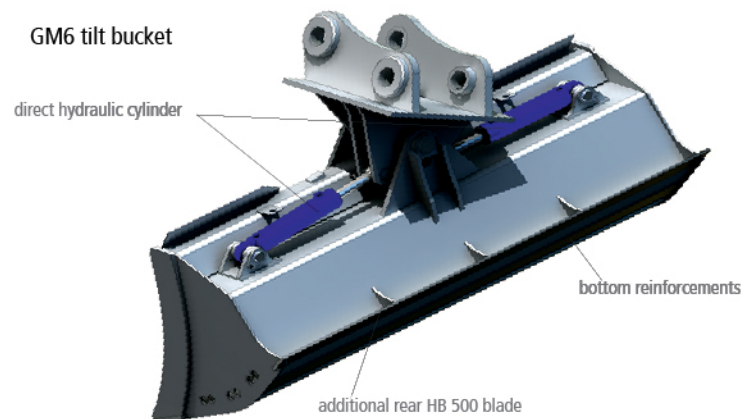
# Hydraulic cleaning buckets

Type designation: KB0 - KB35, GM2 - GM8

Hydraulic cleaning buckets are fitted on excavators with curb weights from 1- 33 tons. They are produced in the **HD (Heavy Duty)** version with reinforced side boards and middle reinforcement.



Hydraulic cleaning buckets are used for ditch deepening, slope finishing, surface levelling and other uses. Buckets feature a robust structure which ensures their long life-cycle. They are equipped with direct hydraulic cylinders, which enable 45° bucketturns to each side. GM category buckets are equipped with an additional rear blade, two direct hydraulic cylinders and an increased ratio of wear resistant material.



## Ditch cleaning buckets for mini excavators

excavator weight (t)	bucket type	width (mm)	capacity (m³)
- 1,8	KB0	1000	0,06
		1100	0,07
1,8 - 2,9	KB1	1000	0,09
		1100	0,10
		1200	0,11
2,9 - 4	KB2	1000	0,10
		1200	0,12
4 - 6	KB3	1400	0,14
		1000	0,12
		1200	0,14
		1400	0,17

## Ditch cleaning buckets for medium excavators and backhoe-loaders

excavator weight (t)	bucket type	width (mm)	capacity (m³)
Backhoe - Loaders	KB35	1200	0,18
		1400	0,19
		1500	0,20
6 - 9	GM2	1400	0,20
		1600	0,22
9 - 12	GM3	1600	0,28
		1800	0,31
		2000	0,35

## Ditch cleaning buckets for hydraulic excavators

excavator weight (t)	bucket type	width (mm)	capacity (m³)
12 - 14	GM4	1800	0,45
		2000	0,50
		1800	0,55
14 - 19	GM5	2000	0,60
		2200	0,65
		2000	0,80
19 - 22	GM6	2200	0,95
		2400	1,10

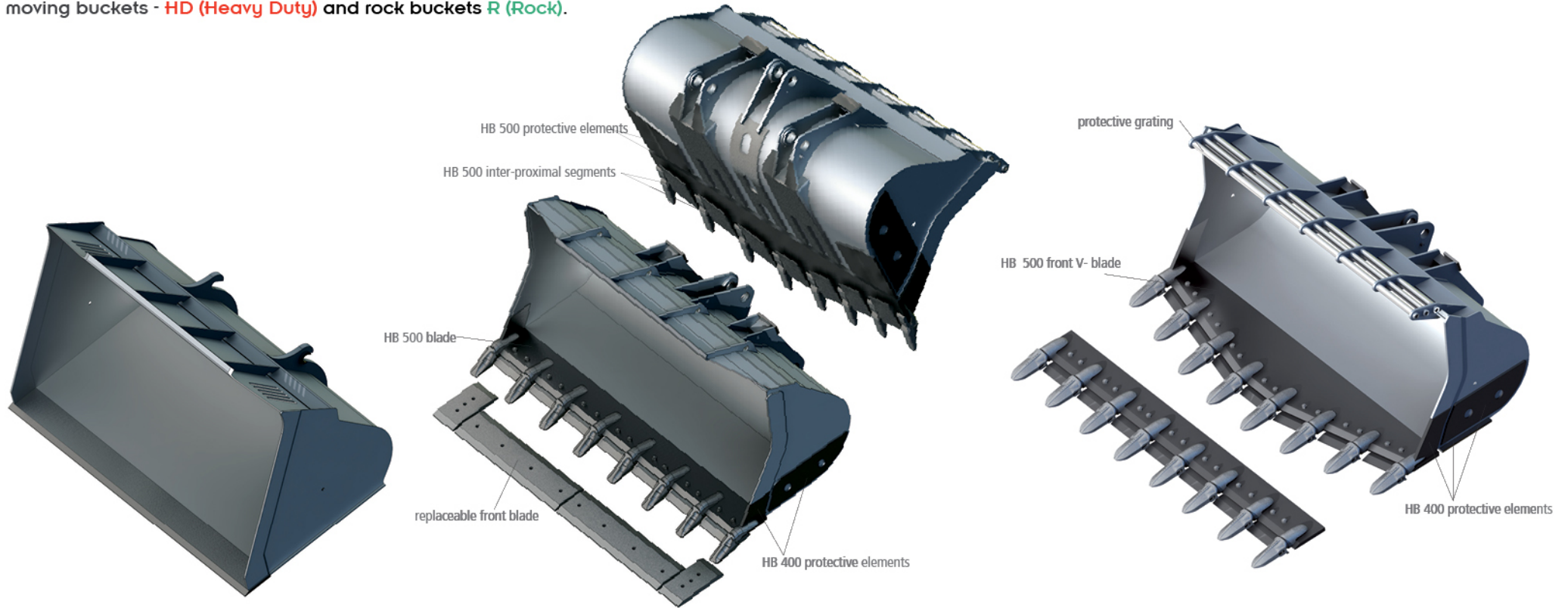
excavator weight (t)	bucket type	width (mm)	capacity (m³)
22 - 28	GM7	2000	1,10
		2200	1,20
		2400	1,30
28 - 33	GM8	2100	1,25
		2200	1,31
		2400	1,44



## Loader Buckets

Type designation: NL050 - NL130

Buckets in this category are fitted on wheel loaders with the machine curb weights from 5,5 - 30tons. They are produced in the version as light loader buckets - **L (Light)**, earth moving buckets - **HD (Heavy Duty)** and rock buckets **R (Rock)**.



### Light loader buckets

Light-version buckets are used for loading light loose material such as wood chips, coal, grain crops, etc. Each bucket is characterized by large capacity with excellent penetration while keeping the material being loaded. Buckets may be equipped with additional replaceable blades.

### Earth moving buckets

HD - version buckets are suitable for work with soil and for loading various material types. These buckets enable excellent penetration and keeps the material being loaded with great reliability. These may also be equipped with welded adapters, replaceable teeth and inter-proximal segments or additional replaceable blades.

### Rock buckets

Rock-version buckets have significant penetration properties in demanding work under quarry conditions. A high ratio of wear resistant material enables a long life-cycle. These may be equipped with V- or direct type blades as well as adapters with replaceable teeth.

Loader curb weight (t)	5,5 - 7,3	7 - 8,2	8 - 9,5	9,4 - 11,7	11,5 - 14,6	14,2 - 17,8	17,7 - 22	22 - 23,5	23,5 - 30
bucket type	NL050	NL060	NL070	NL080	NL090	NL100	NL110	NL120	NL130
bucket width (mm)	2100	2300	2400	2500	2600	2750	2900	3000	3200
bucket capacity (m <sup>3</sup> )	0,6 - 1,6	1,2 - 2,0	1,4 - 2,2	1,5 - 2,5	1,8 - 2,9	2,6 - 3,0	2,8 - 4,2	3,3 - 4,5	4,1 - 5,5







## Other buckets and dipper buckets

Apart from standard buckets already presented in this catalogue, Metalport also produces other numerous types of buckets such as: drainage buckets, trapezoidal buckets, buckets and dipper buckets for backhoe-loaders, telescopic manipulators, buckets for skid loaders etc.

### Skeleton buckets

For use when material separation is required, e.g. branches, peat, stone separation from sand or gravel on demolition worksites



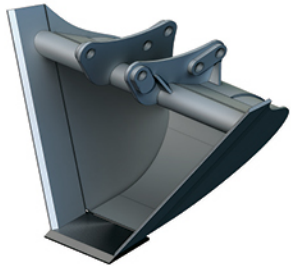
skeleton bucket



loader bucket

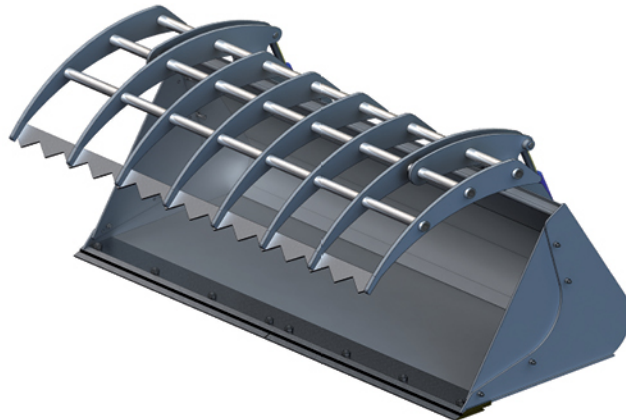
### Trapezoidal buckets

They are used for preparation and maintenance of irrigation ditches and channels with side edge gradients according to requirements



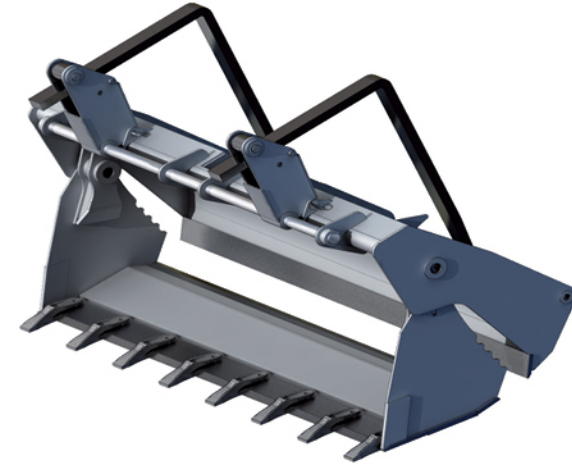
### Loader bucket with blank holder

For loading bulky materials such as wood waste, etc. These are also used in agriculture for loading various material types



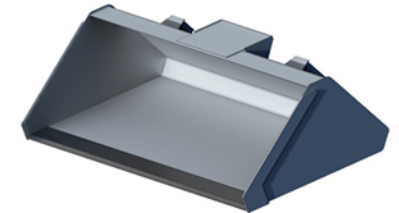
### Combined 4 in 1 buckets

Combined buckets are designed for backhoe-loaders. With an option to mount (6 in 1)



### Skid steer

They are designed for skid steer loaders



### Drainage buckets

They are used for digging small drainage trenches

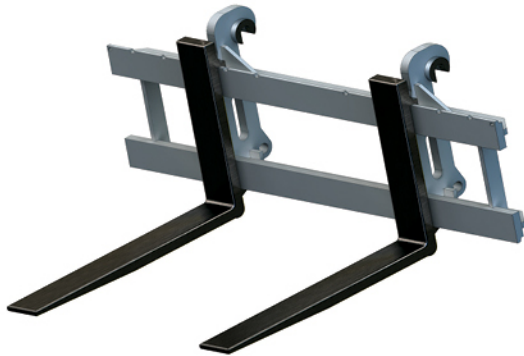


## Other accessories

Metalport's range of production also includes many other accessories for various machine types such as adapter plates for hammers and shears, ripper mandrels, forklifts, snow ploughs, forks for silage, demolition attachments, etc.

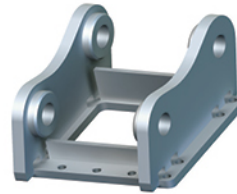
### Pallet Forks

Designed for transferring or loading bulk materials, these are fitted on a bearing structure with manual fork shifting. It is equipped with coupling designed for wheel loaders or hydraulic excavators.



### Adapter Plates

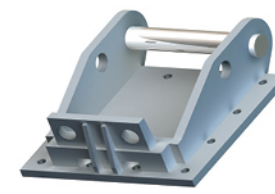
Adapter plates are used to attach hydraulic hammers and shears to the machine. It is equipped with coupling quick coupler of excavator.



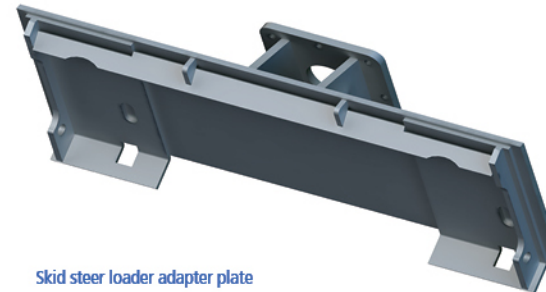
Direct coupling to pins



CW Verachtert quick coupler system



Lehnhoff quick coupler system



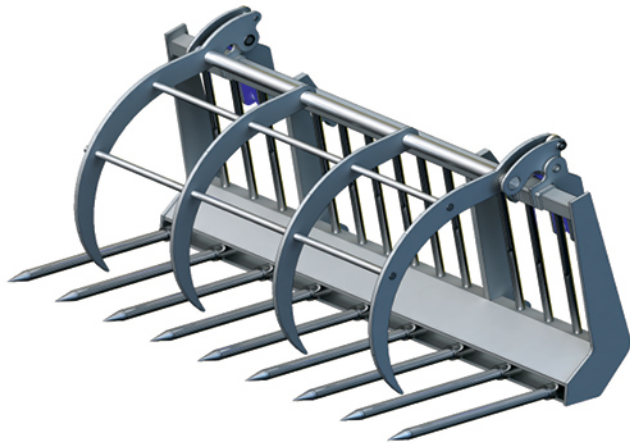
Skid steer loader adapter plate



### Excavator Rippers

Used in quarries, in extraction and demolition work, etc. These stand out with their robust structure with wear resistant elements in spots impacted by stress.



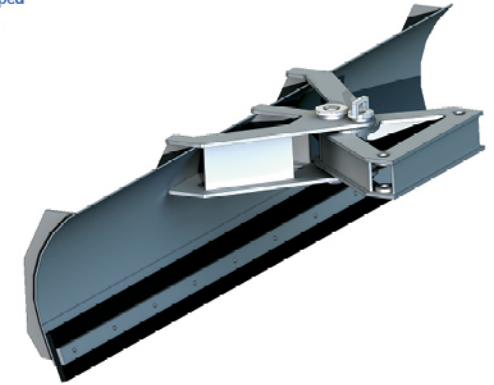
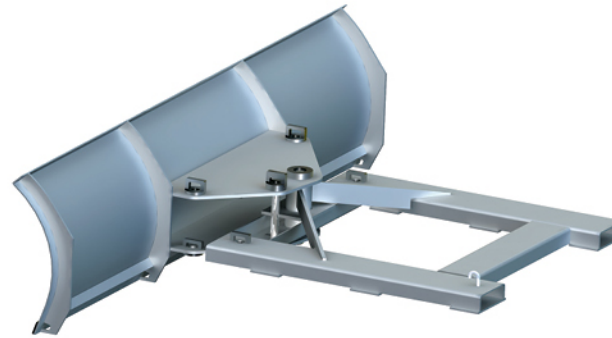


### Forks for silage

They are used in agricultural production and when transporting silage, straw packs or other material. They are mostly fitted on telescopic manipulators.

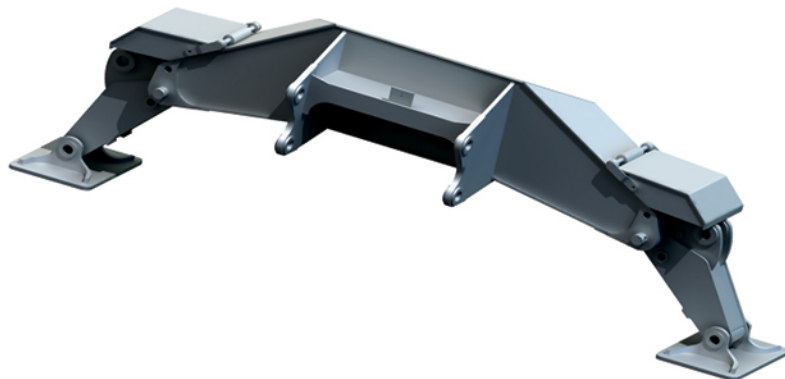
### Snow ploughs

Plough for clearing roads, pavements, car parks and other areas. They may be equipped with various suspension system with coupling behind tractors, on forklift trucks, etc.



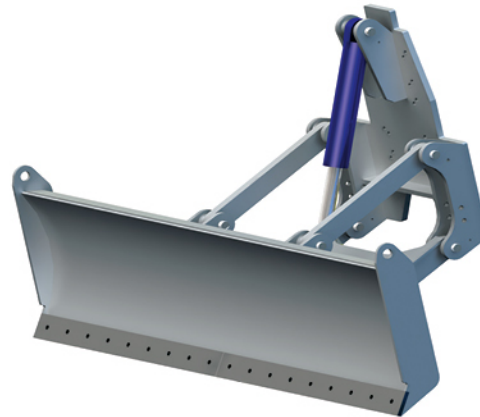
### Supporting legs

They are used to stabilise wheel excavator during work activities.



### Front dozer blades for graders

Dozer blades for wheel graders, which are fitted on the front of the grader enable improvement and extension of grader work activities.



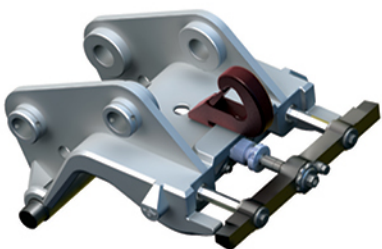
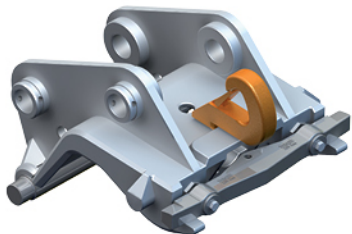
## Quick couplers

Type designation: CW05 - CW45, MRU30 - MRU40

Verachtert CW quick couplers serve for quick and comfortable exchange of accessories with all construction machine type. They are produced for machines with weights from 1 - 55 tons, with three handling methods: mechanic, mechanic with spindle and hydraulic.

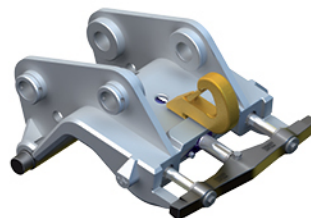
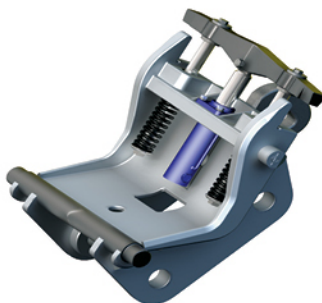
### Mechanic handling

The easiest variant with very good acquisition costs, secured by two screws.



### Hydraulic handling

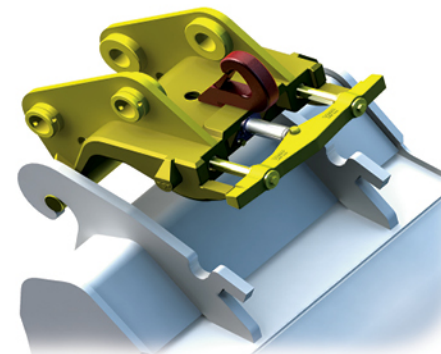
These enable the connection and disconnection of working tools within a few seconds without the necessity to leave the cabin.



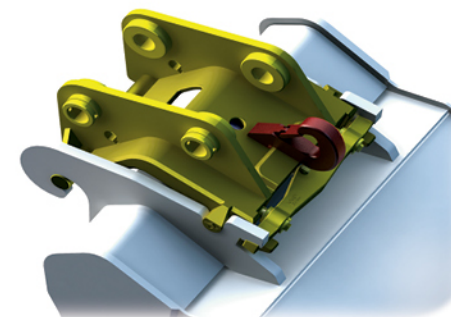
### Mechanic handling by spindle

Variant with easy and quick manipulation that does not require a hydraulic connection.

### Fitting principle of CW quick couplers



Quick coupler fitting into bucket hooks



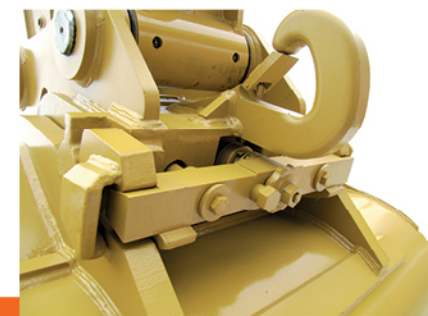
Bucket secured by blocking

### CW quick coupler - mechanic and hydraulic version

Type	CW00	CW05	CW10	CW20	CW30	CW40	CW45
Weight (kg)	12	25	75	190	230	240	440
Excavator weight (t)	-1,2	-3,5	3,5 - 10,5	7,5 - 15	15 - 25	20 - 30	25 - 40

### CW quick coupler - narrow version

Type	CW20S	CW30S	CW40S	CW45S
Weight (kg)	180	220	230	400
Excavator weight (t)	-3,5	3,5 - 10,5	7,5 - 15	15 - 25



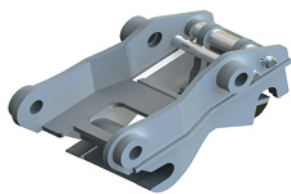


### MRU mechanical quick couplers

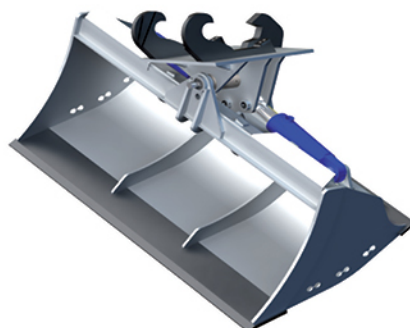
This mechanical quick coupler variant enables the use existing buckets without the necessity to adjust hooks.



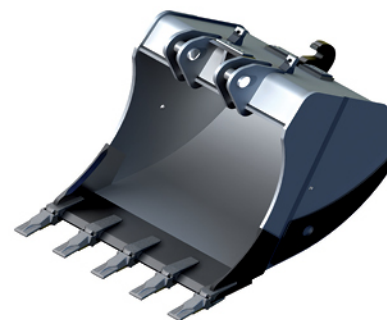
Based on your requirements, our firm makes it possible to fit bucket suspension system for anchoring various types of quick coupler system.



MRU quick coupler fitting into bucket suspension



bucket with anchoring for SMP2 quick coupler



bucket with anchoring for Volvo S2 quick coupler



bucket with anchoring for Lehnhoff quick coupler

If you are interested in using quick couplers on existing buckets, we also make it possible to exchange suspension with adapters suitable for using on Verachtert CW quick couplers.



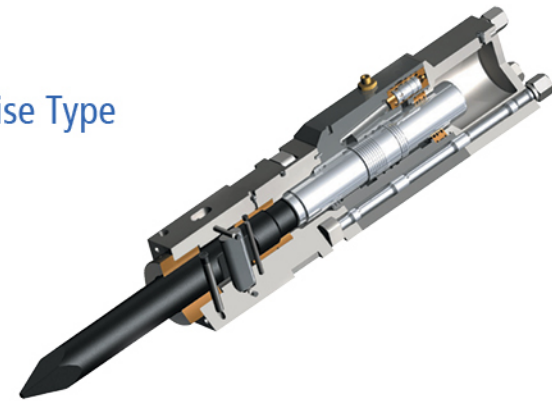
#### MRU quick coupler

Type	MRU30	MRU35	MRU40
Excavator weight (t)	4 - 6	6 - 10	9 - 12

## Hydraulic Hammers

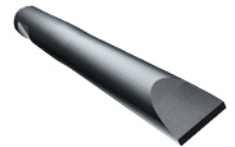
GB uses only the highest quality materials which are machined by our experienced technicians utilizing state-of-the-art manufacturing technology and production machinery.

Low Noise Type



**Moil point (pyramid point)**

- Fine/medium concrete demolition, non-stratified rock
- Secondary mining of soft/medium blocks



**Wedge**

- All types of digging or narrow trenching of soft/medium stratified rock



**Blunt**

- Breaking block (up to medium hardness) or cutting block to size



**Cone**

- Universal tool



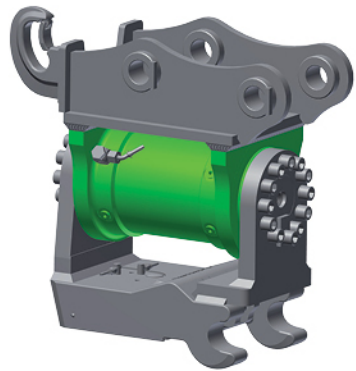
0,7 - 70 tons  
Weight of Excavators



## Tilting and rotating adapters

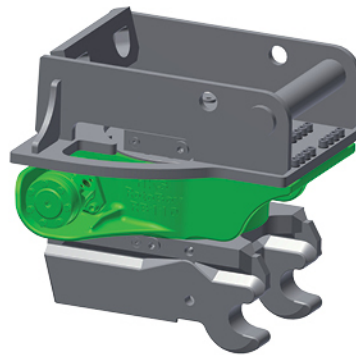
Increase the productivity of your attachments, turning your hydraulic excavator into a multifunctional machine. We tilt your attachments and buckets up to 180° and/or let them endlessly rotate left/right.

### XtraTilt Tilting adapter



Tilts and positions up to 100°, 140° or 180°. Small, compact, user friendly for more efficient work.

### RotoBox Rotating adapter

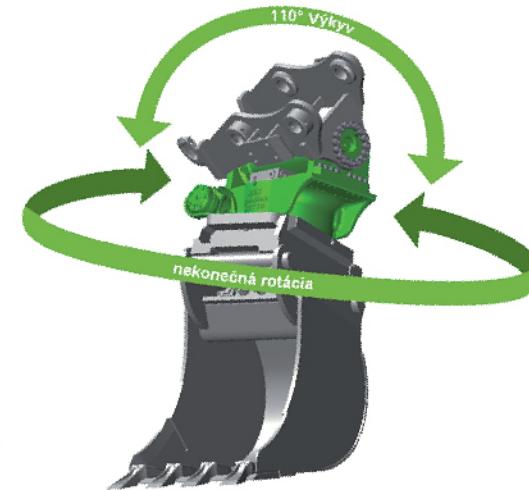


Endless left/right rotation with oil feedthrough up to 360l/min.



Fivefold Rotary Oil feedthrough

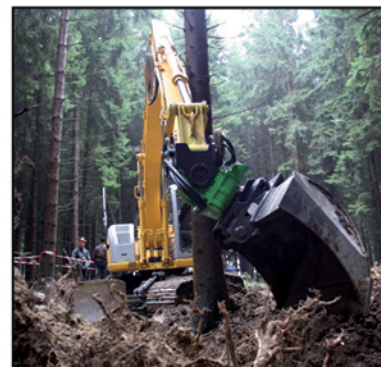
### TiltRotator Tilting and rotating adapter



Tiltrotator supports your hydraulic excavator with two new functions: endless rotation and tilting up to  $\pm 55^\circ$ , if desired even up to  $\pm 70^\circ$ . Increased machine productivity up to 40%.



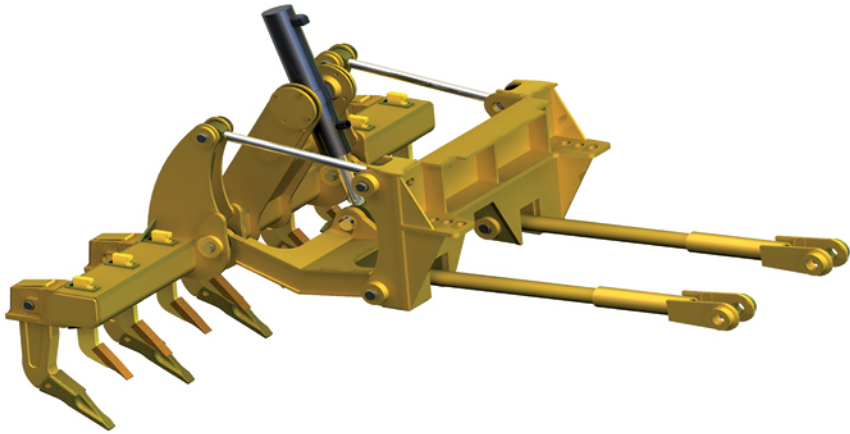
## BETTER WITHOUT CYLINDERS !!!



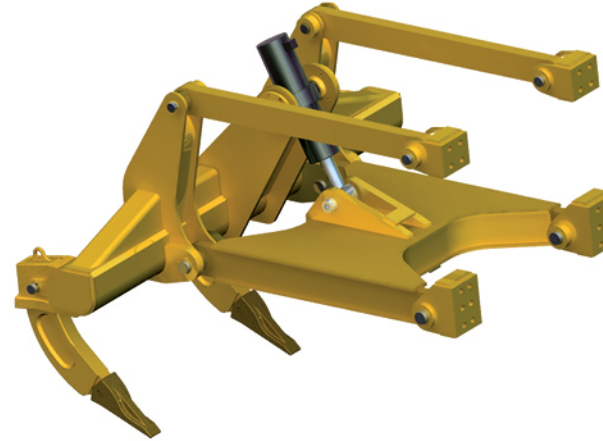
## Rippers

Type designation: Rippers 14H, 14G, D5M, D6M, D6R, D6H, D8R...

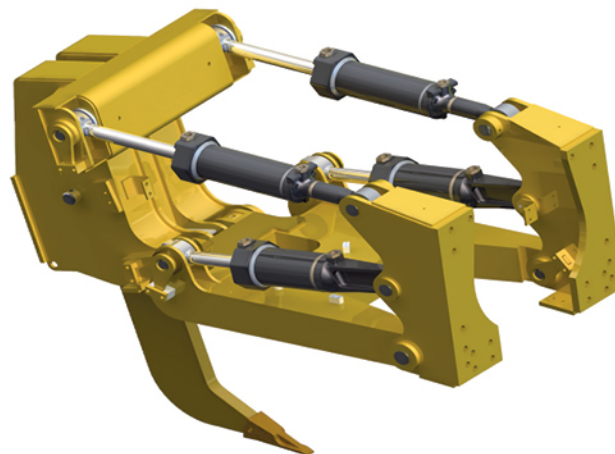
Rippers for CAD Dozers and Graders are used as additional equipment for these machines that enable on extension of their effectiveness. Delivery scope includes complete device including teeth, fastening parts and hydraulic equipment.



Ripper for CAT 14H wheel grader



Ripper for CAT D6R tracked dozer



Ripper for CAD D8R tracked dozer

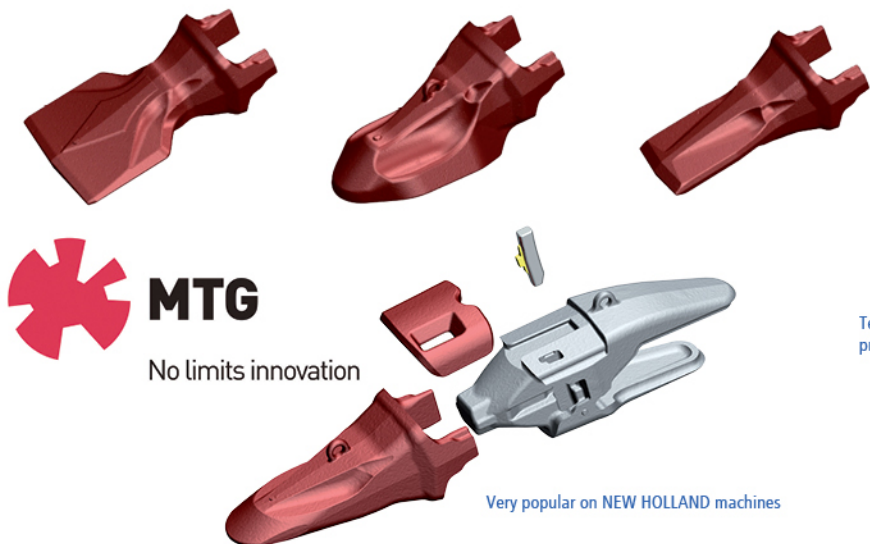






# Teeth systems

Our company also provides sales and consulting when selecting various types of teeth systems and their variants for either screwed or hard surface teeth. We have most types of teeth systems available in stock for prompt deliveries to our customers.



**MTG**

No limits innovation

Very popular on NEW HOLLAND machines



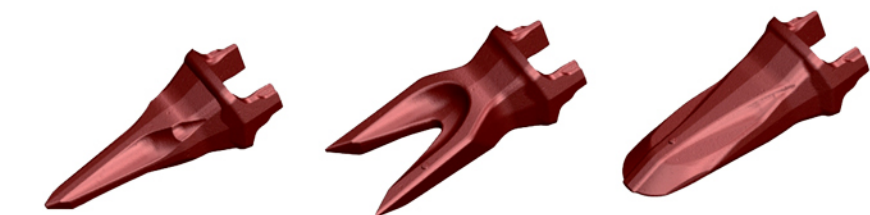
Teeth system from the best world-wide known producers, useful for the most extreme conditions



ESCO SUPER V



ESCO ULTRALOK



Weld on SILVER

Fitted on mini excavators up to 3,6t.

Bolt on teeth

Fitted to mini/midi excavators and backhoe loaders. JCB, CAT, KOMATSU, NEW HOLLAND,...



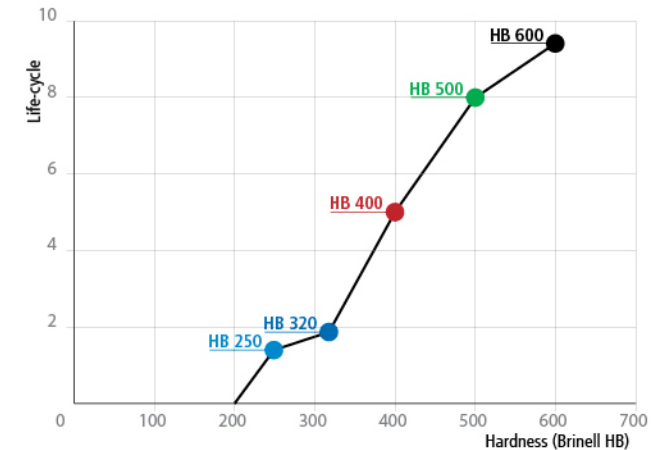
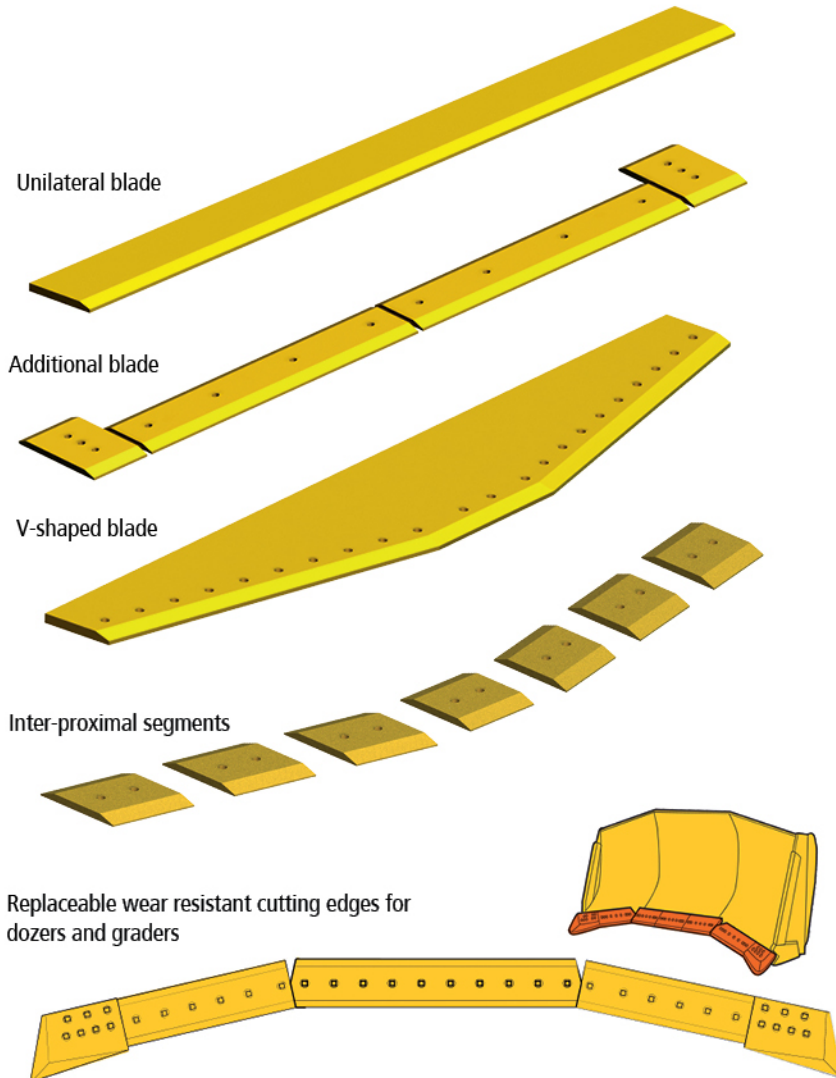
Weld on HENSLEY

Fitted mostly on KOMATSU excavators



## Wear resistant blades and flats

Wear resistant, high quality, roller blades and flats in hardness grades including HB 400 and HB 500 (HB - Brinell hardness scale), with one or dual-sided chamfering, induction quenched in standard 6m lengths. These are delivered in accordance with customer dimensions listed in tables or lengths according to customer requirements. Furthermore, we deliver additional bored blades and blade segments for wheel loaders as well as blades for dozers and graders.



Steel type: wear resistant Mn - Cr - Mo - B steel with low carbon content (C=0,17 - 0,20)

Hardness: HB 400 ( HB 380 - 440 ) - after heat - treatment on the entire thickness of the profile

C max	Si max	Mn max	P max	S max	Cr max	Ni max	Mo max	B max
0,19	0,35	1,40	0,03	0,03	0,50	0,30	0,25	0,004

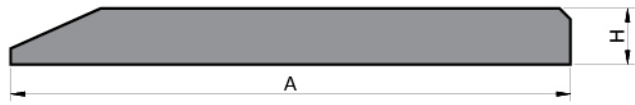
Mechanical features:	Tensile strength	(Rm) 1470N/mm2
	Yield point	(Re) 1100N/mm2
	Elongation	(A5) 11,3%

Steel type: wear resistant Mn - Cr - Mo - B steel with medium carbon content (C=0,26 - 0,30)

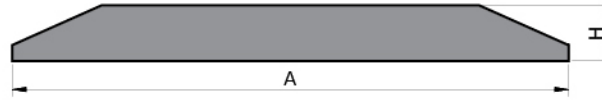
Hardness: HB 500 ( HB 470 - 530 ) - after heat - treatment on the entire thickness of the profile

C max	Si max	Mn max	P max	S max	Cr max	Ni max	Mo max	B max
0,28	0,35	1,40	0,03	0,03	0,50	0,30	0,30	0,004

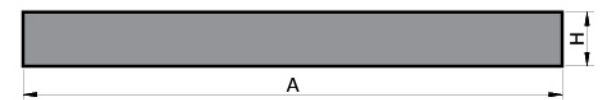
Mechanical features:	Tensile strength	(Rm) 1770N/mm2
	Yield point	(Re) 1330N/mm2
	Elongation	(A5) 9,1%



dimensions		weight kg/m
A (mm)	H (mm)	
110	12	9,6
110	16	13,1
150	16	17,8
150	20	21,7
200	20	29,6
200	25	36,7
250	25	44,8
250	30	55,8
300	30	66,2
300	35	77,7
300	40	89,5
400	45	136,9
400	50	152,0



dimensions		weight kg/m
A (mm)	H (mm)	
150	16	17,3
150	20	21,0
200	20	28,3
200	25	36,4
250	25	43,2
250	30	53,2
300	30	65,2
300	35	77,2
300	40	88,0
400	40	120,0
400	45	133,4



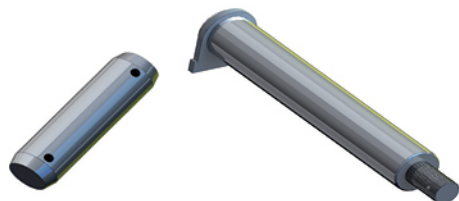
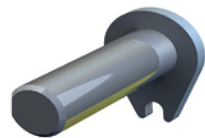
dimensions		weight kg/m
A (mm)	H (mm)	
100	10	7,8
120	12	11,2
100	15	11,7
130	15	15,2
160	15	18,7
120	20	18,7
180	20	28,0

## Spare and wear parts

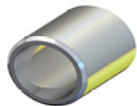
We also provide a number of spare and wear parts within sales and service



safety hooks



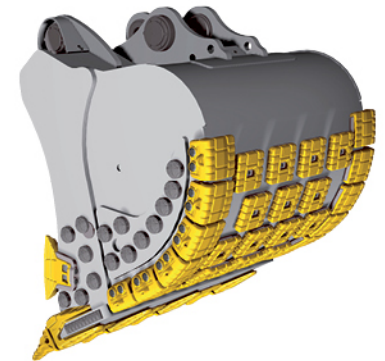
quenched pins and bushings

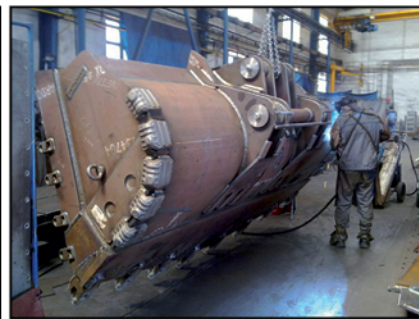
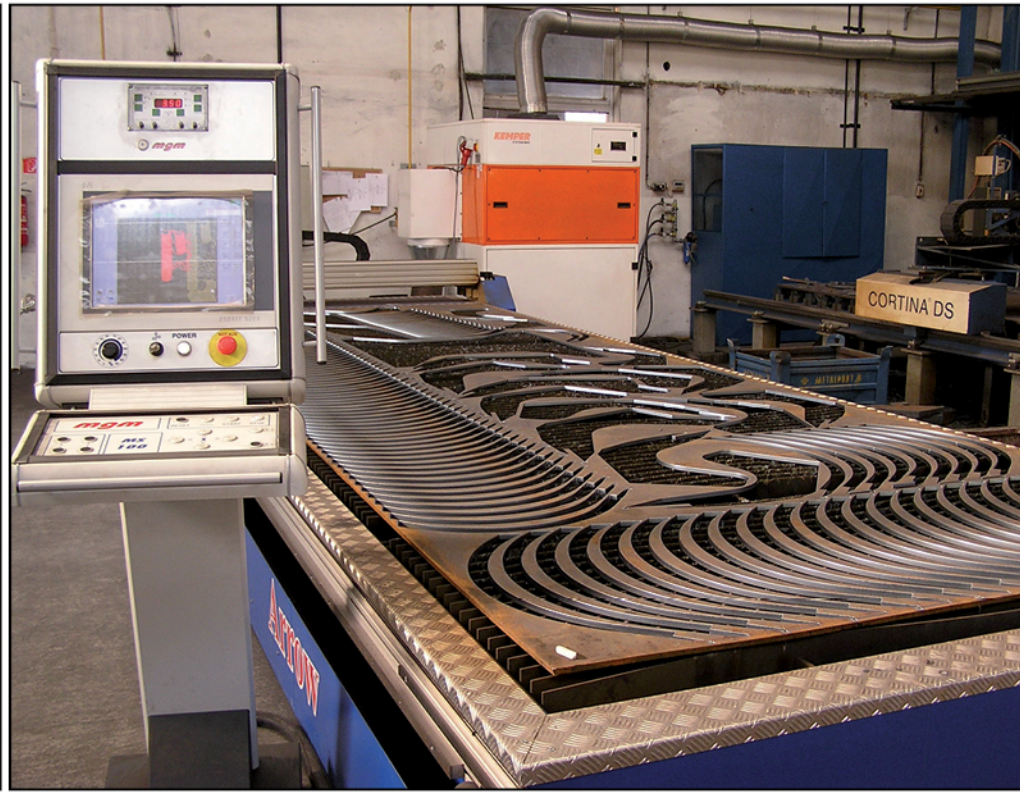
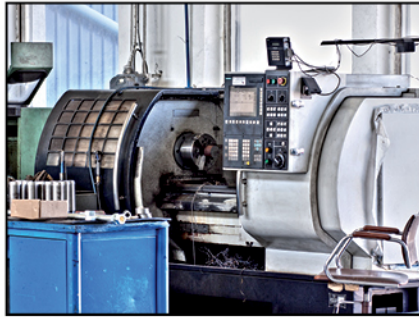
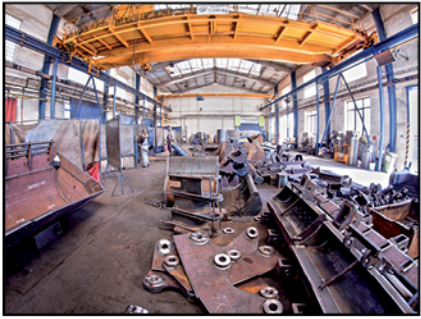


strengthened screws and nuts



Bucket protection





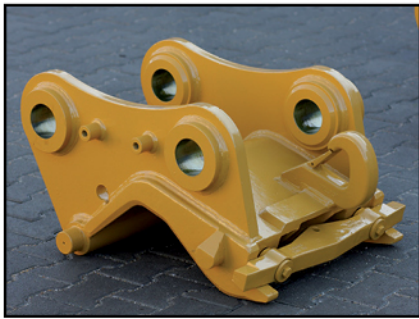
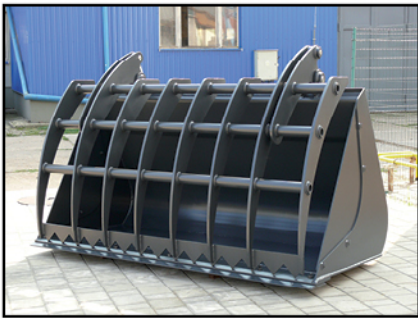


CAT 312C  
GM4 - 2000 + CW30S



CAT 324D  
GM7 - 2400







CATERPILLAR 980G - ROCK  
Capacity: 4.0 m<sup>3</sup>  
Teeth and protection system MTG

**METALPORT s.r.o.**

**Hraničná 2  
Košice 040 17  
Slovakia**

**tel.: +421 55 729 25 31  
fax: +421 55 685 55 57  
metalport@metalport.sk  
www.metalport.sk**

---